

## Almstrup65 – pairings for 2014 – planned as of 17<sup>th</sup> December 2013

### Indhold

Almstrup65 – pairings for 2014 – planned as of 17 <sup>th</sup> December 2013 .....	1
Pairing 1: cock 12-2671A(inbreed) and hen 12-630U .....	2
Pairing 2: cock 05-8920A hen 06-3807U .....	2
Pairing 3: cock 08-734A(inbreed) and 13-6630U .....	2
Pairing 4: cock 12-9244A and hen 11-4062U(Inbreed).....	3
Pairing 5: cock 09-4A and hen 11-7742U .....	3
Pairing 6: cock 02-4036A and hen 02-7077U .....	3
Pairing 7: cock 06-2108A and hen 09-77U(inbreed).....	4
Pairing 8: cock 09-5743A and hen 12-1414U .....	4
Pairing 9: cock 11-7694A and hen 09-92U(Inbreed).....	4
Pairing 10: cock 03-596A and hen 05-2527U .....	5
Pairing 11: cock 03-1142A and hen 09-91U(Inbreed).....	5
Pairing 12: cock 02-6965A and hen 01-1726U (First breeding pair) .....	5
Pairing 13: cock 13-358A(Inbreed) and hen 13-5017U .....	6
Pairing 14: cock 10-2773A and hen 13-6800U .....	6
Pairing 15: cock 11-770A and hen 13-5024U .....	6
Pairing 16: cock 05-802A and hen 13-6790U .....	7
Pairing 17: cock 13-6725A and hen 13-6692U .....	7
Pairing 18: cock 08-7392A and hen 12-619U .....	7
Pairing 19: cock 13-2712A and hen 08-778U(inbreed).....	8
Pairing 20: cock 03-4993A(The grizzled) and hen 12-561U .....	8
Pairing 21: cock 13-2727A and hen 10-409U(Inbreed).....	8
Pairing 22: cock 13-6631A and hen 09-327U .....	9
Breeding spare hen 07-316U(Daughter of the grizzled) .....	9
Breeding spare hen 10-478U .....	9
Breeding spare hen 10-2568U .....	10
Breeding spare hen 12-236U(Inbreed) .....	10
Breeding spare hen 13-343U .....	10

The first 2 numbers in the band number is the year of birth.

Since the last time I added 13 pigeons, and for those the original eye-sign pictures are in this document.

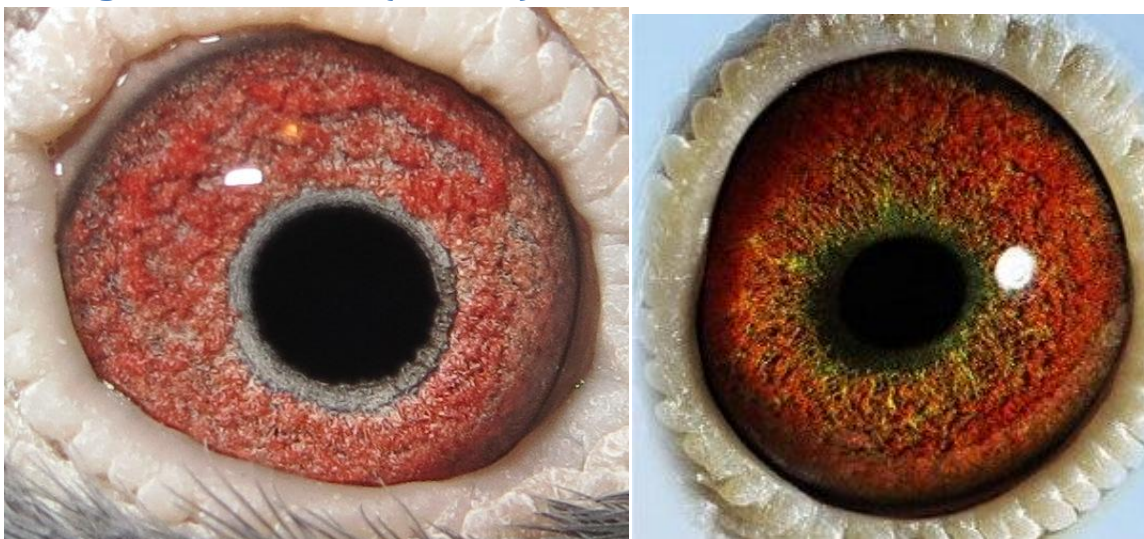
**Pairing 1: cock 12-2671A(inbreed) and hen 12-630U**



**Pairing 2: cock 05-8920A hen 06-3807U**

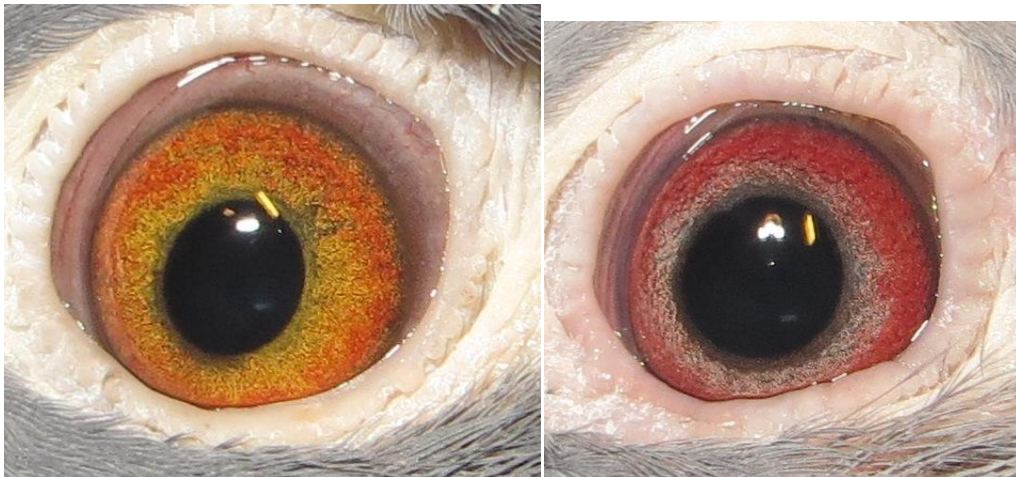


**Pairing 3: cock 08-734A(inbreed) and 13-6630U**





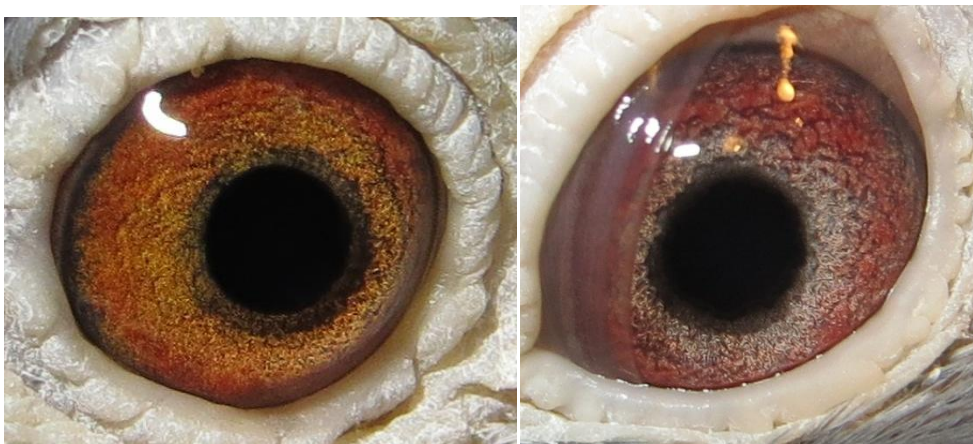
**Pairing 4: cock 12-9244A and hen 11-4062U(Inbreed)**



**Pairing 5: cock 09-4A and hen 11-7742U**

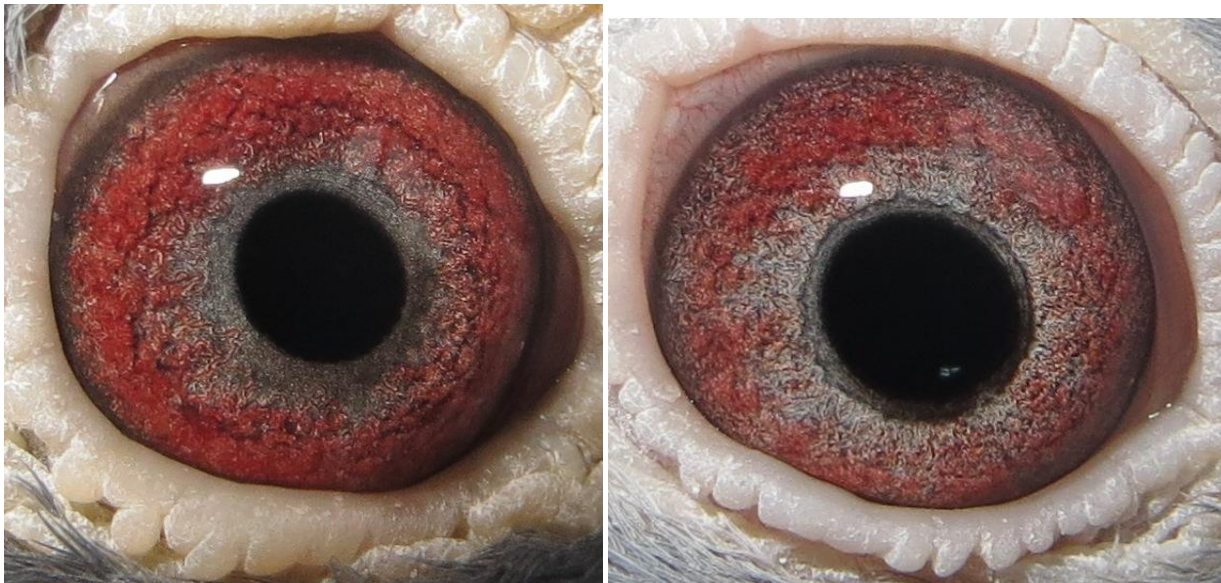


**Pairing 6: cock 02-4036A and hen 02-7077U**





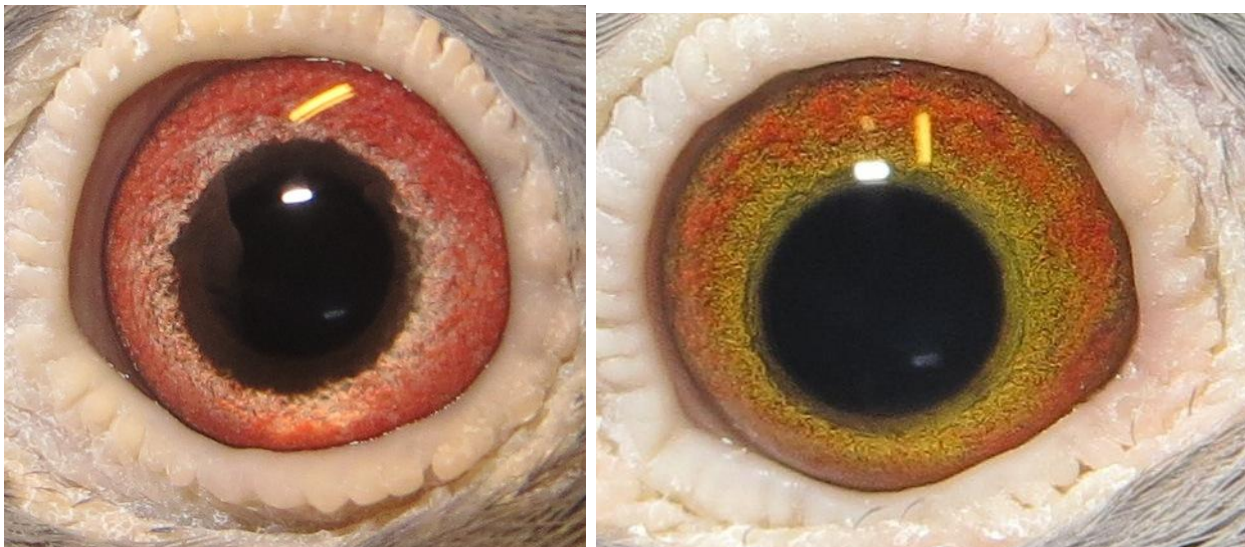
**Pairing 7: cock 06-2108A and hen 09-77U(inbreed)**



**Pairing 8: cock 09-5743A and hen 12-1414U**



**Pairing 9: cock 11-7694A and hen 09-92U(Inbreed)**

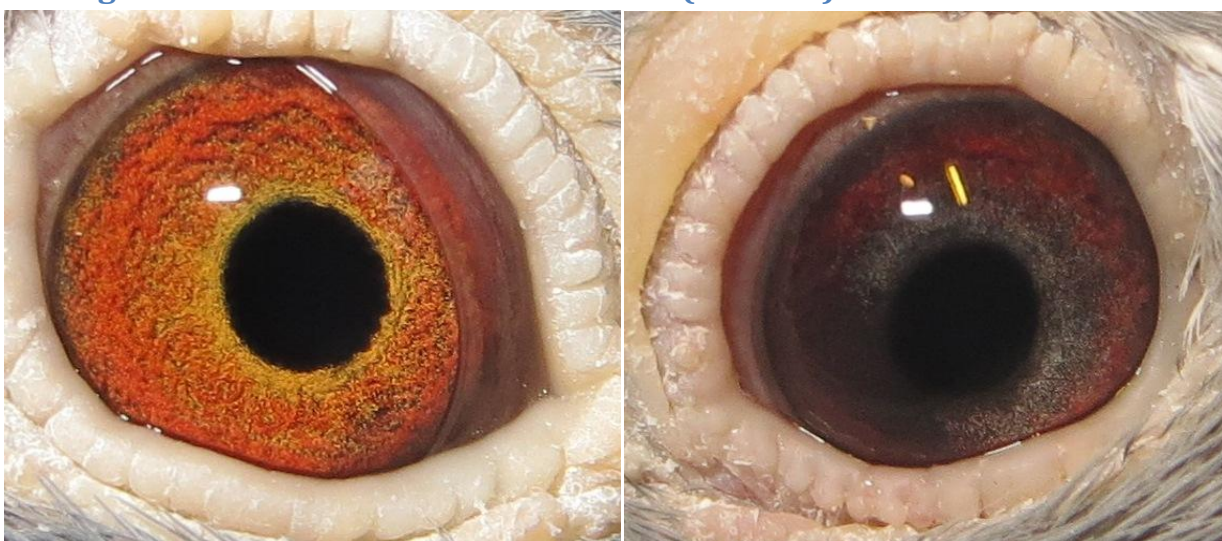




**Pairing 10: cock 03-596A and hen 05-2527U**



**Pairing 11: cock 03-1142A and hen 09-91U(Inbreed)**



**Pairing 12: cock 02-6965A and hen 01-1726U (First breeding pair)**





**Pairing 13: cock 13-358A(Inbred) and hen 13-5017U**



**Pairing 14: cock 10-2773A and hen 13-6800U**

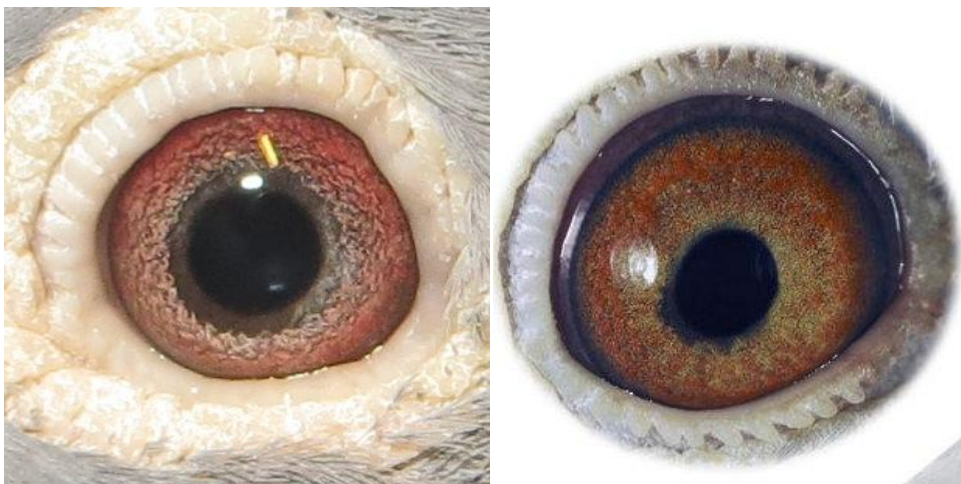


**Pairing 15: cock 11-770A and hen 13-5024U**





**Pairing 16: cock 05-802A and hen 13-6790U**



**Pairing 17: cock 13-6725A and hen 13-6692U**



**Pairing 18: cock 08-7392A and hen 12-619U**





**Pairing 19: cock 13-2712A and hen 08-778U(inbreed)**



**Pairing 20: cock 03-4993A(The grizzled) and hen 12-561U**

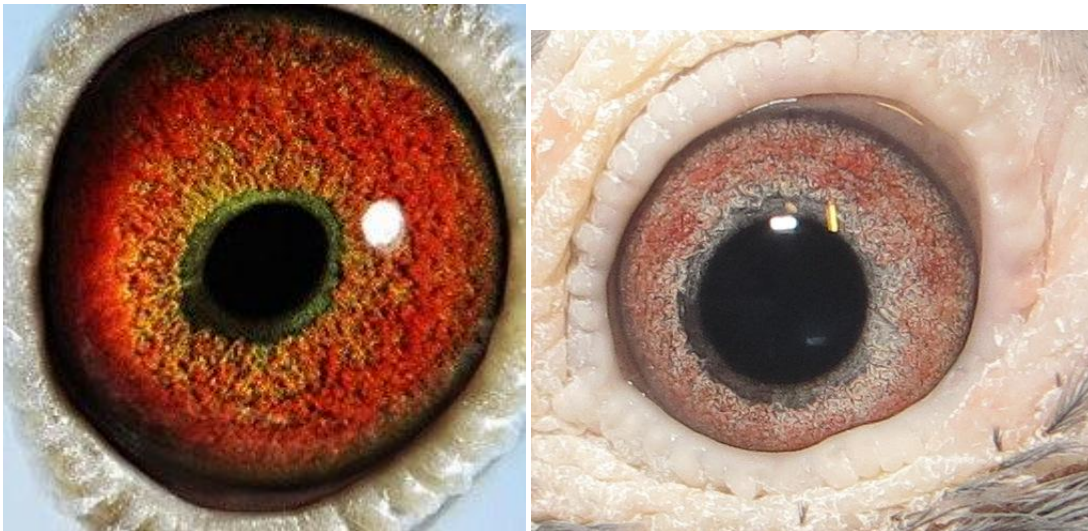


**Pairing 21: cock 13-2727A and hen 10-409U(Inbreed)**





**Pairing 22: cock 13-6631A and hen 09-327U**



**Breeding spare hen 07-316U(Daughter of the grizzled)**

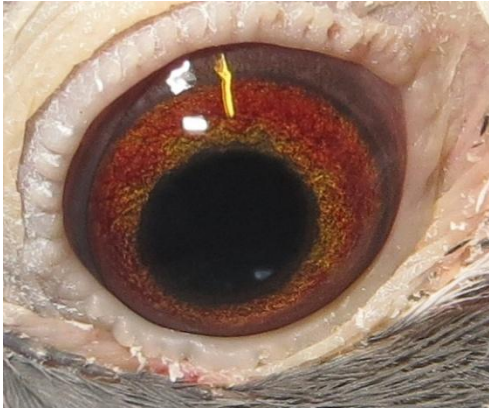


**Breeding spare hen 10-478U**





**Breeding spare hen 10-2568U**



**Breeding spare hen 12-236U(Inbreed)**



**Breeding spare hen 13-343U**

